

4

LENGTH AND PERIMETER

White
Rose
Maths



From White Rose Maths schemes for Year 4 Autumn Term
BLOCK 3 - LENGTH AND PERIMETER

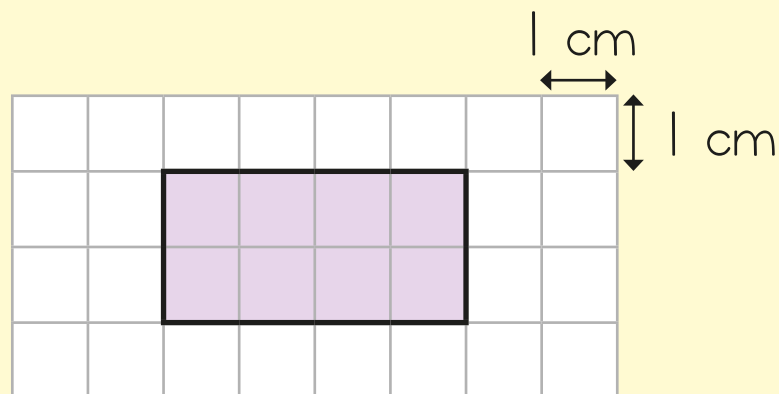
- 1 Complete the bar model.



- 2 Circle the lengths less than 600 m.

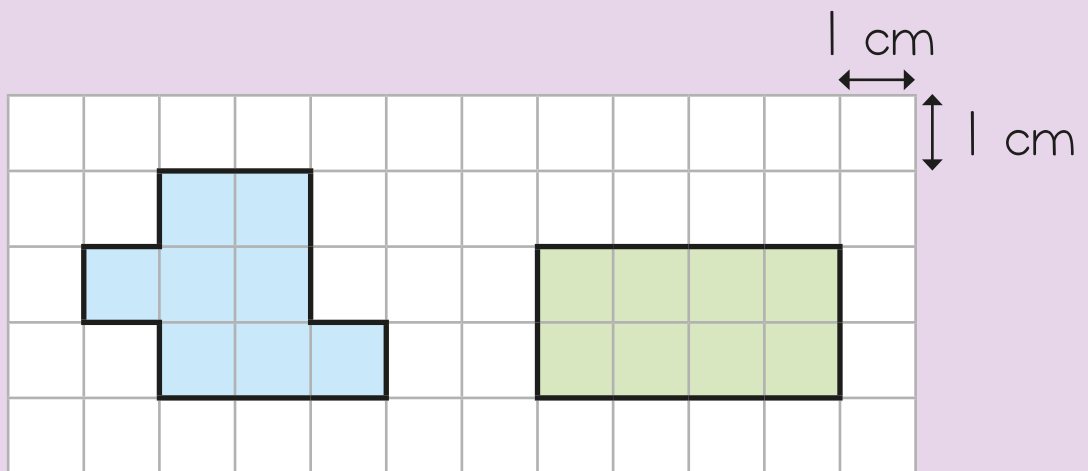
750 m $\frac{1}{2}$ km
60 m 6 km

- 3 What is the perimeter of the shaded rectangle?



4 What is 550 m less than 3 km?

5



Sam thinks the shapes have the same perimeter.

Do you agree?

Yes

No

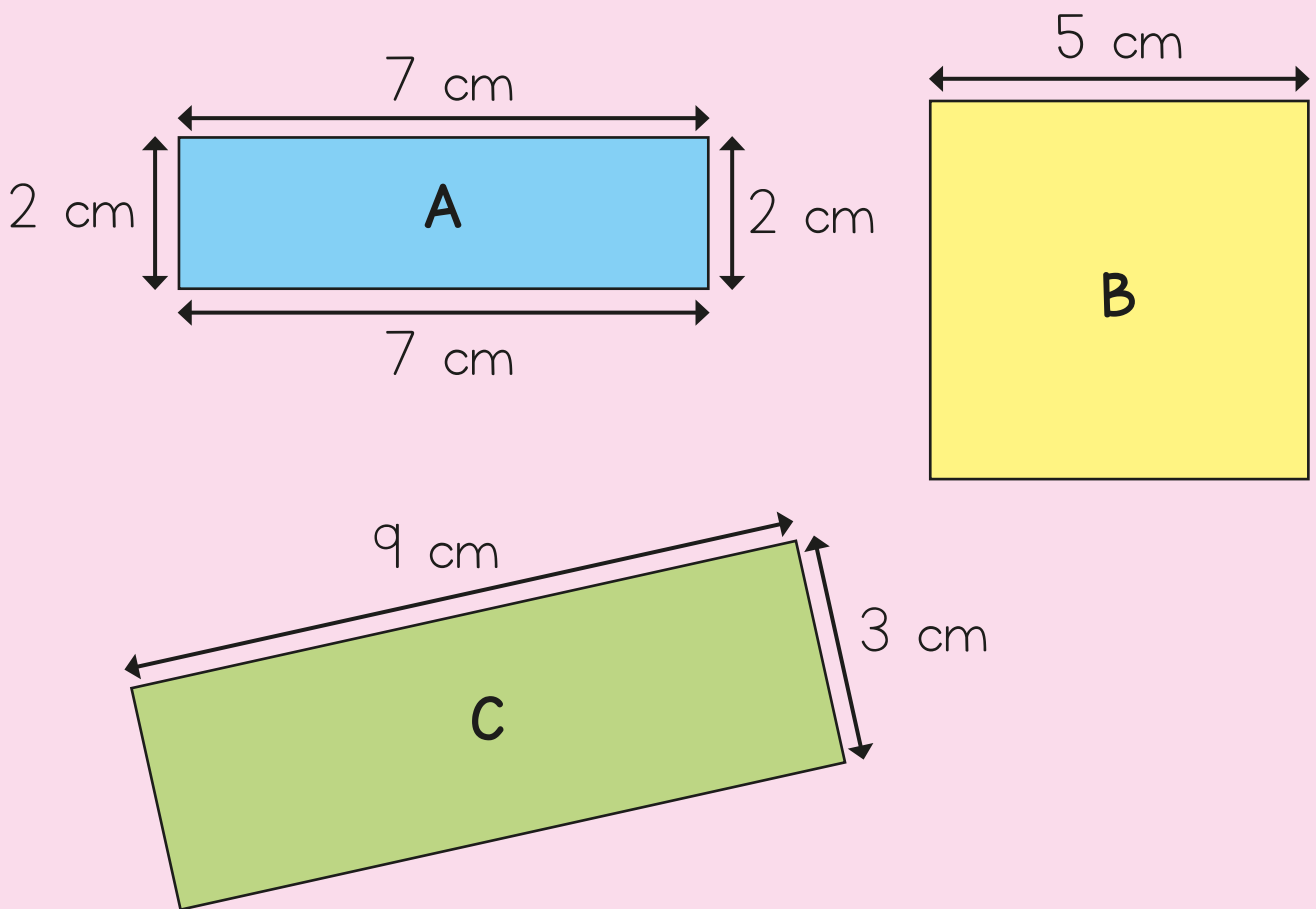
Explain why.

6 Here are 3 shapes.

Shape B is a square.

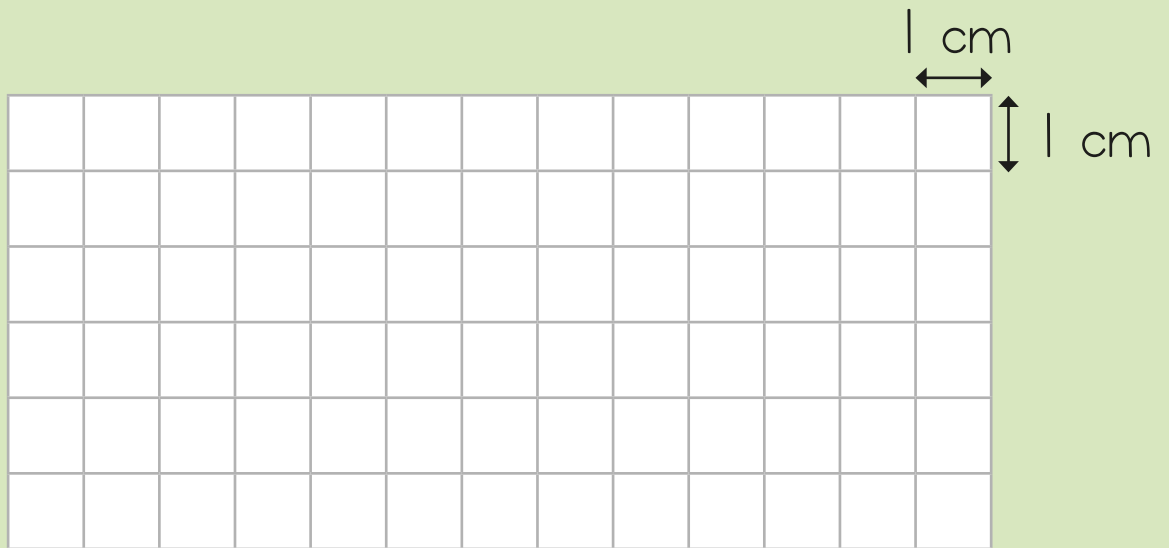
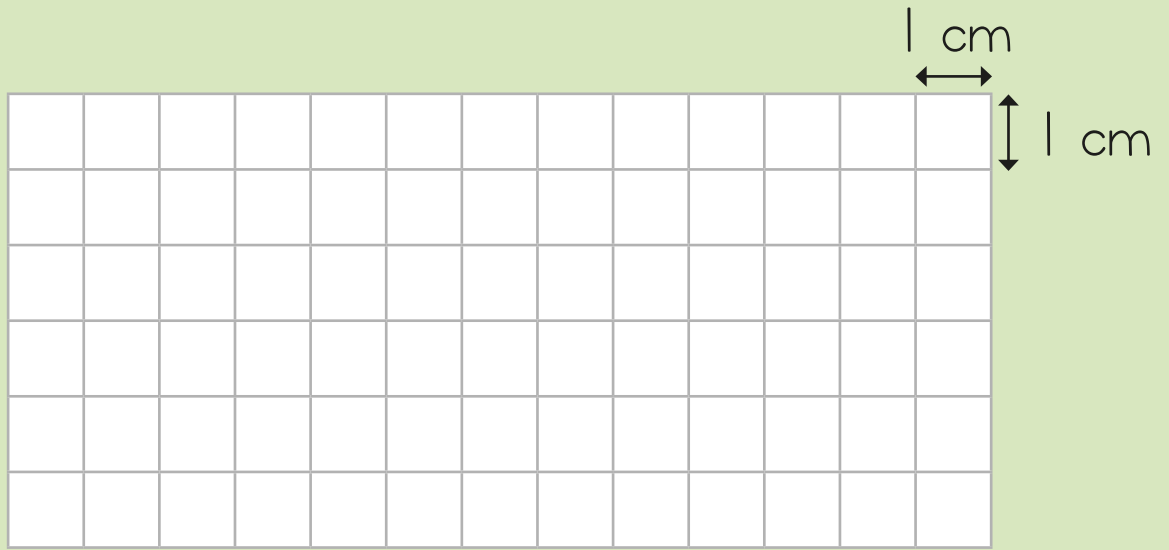
Put the shapes in order of their perimeter.

Start with the **greatest** perimeter.



A large empty rounded rectangular box for writing the answer.

- 7 Draw three different rectangles, each with a perimeter of 16 cm.

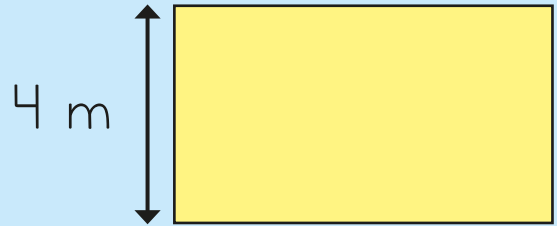


8 Here is a rectangle.

Each side is:

✿ a whole number

✿ less than 10 m



Circle the lengths that could be the perimeter of the shape.

19 m

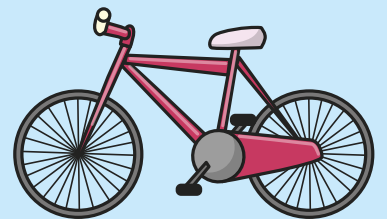
20 m

24 m

28 m

9 Kim cycles 5 km and 400 m.

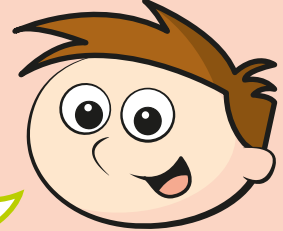
Jack cycles 3,500 m.



How much further does Kim cycle than Jack?

- 10 A rectangle has a perimeter of 24 cm.
The length of the rectangle is 10 cm.

The opposite length
is also 10 cm, so the width
must be 4 because
 $10 + 10 + 4 = 24$

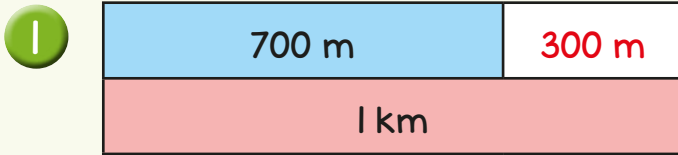


What mistake has Teddy made?

What is the correct width of the rectangle?

cm

Answers



2 60 m $\frac{1}{2}$ km

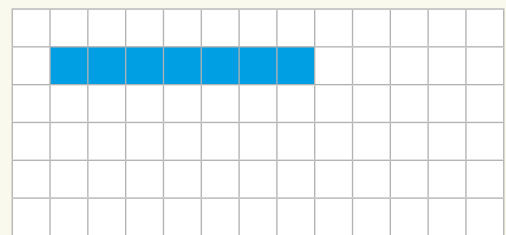
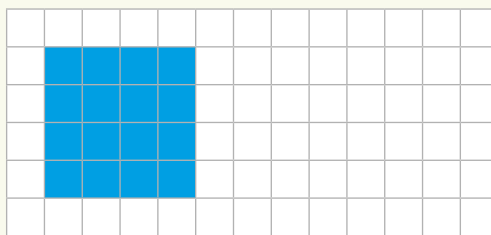
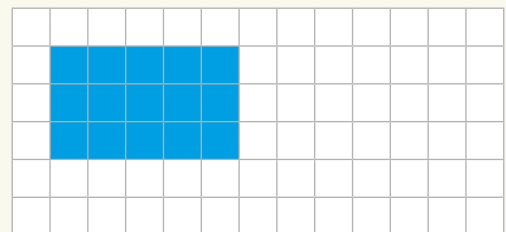
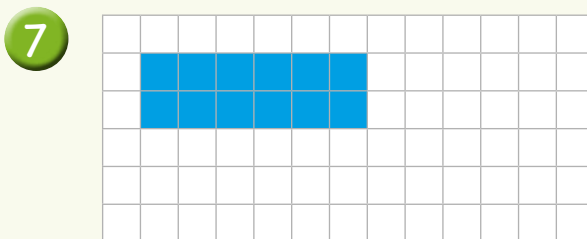
3 12 cm

4 2,450 m

5 No

The blue shape has a greater perimeter.

6 C (24 cm), B (20 cm), A (18 cm)



8 20 m 24 m

9 1,900 m

10 Teddy has forgotten that the rectangle has four sides:
 $10 + 10 + 2 + 2 = 24$

The correct width of the rectangle is 2 cm.